

MONTHLY MEMBERSHIP PROGRESS REPORT

District 27 D1

Results as of: 4/30/2024

GMT:

LOCATION WISCONSIN

GMT CA

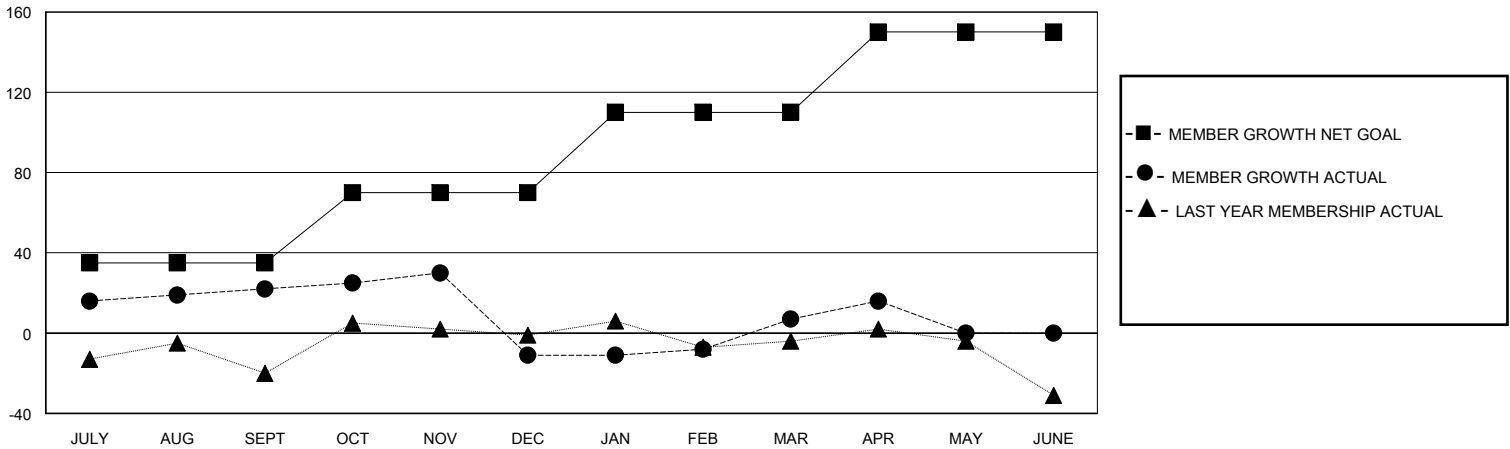
Clubs			
RESULTS FOR 2023-2024			
QUARTER	NEW CLUB GOAL	NEW CLUBS	DROPPED CLUBS
JULY/AUG/SEPT	0	0	0
OCT/NOV/DEC	0	0	1
JAN/FEB/MAR	0	0	0
APR/MAY/JUNE	1	0	0

Members			
RESULTS FOR 2023-2024			
QUARTER	MEMBER GROWTH NET GOAL	MEMBER GROWTH ACTUAL	DROPPED MEMBERS ACTUAL (including transfers)
JULY/AUG/SEPT	35	63	39
OCT/NOV/DEC	35	47	60
JAN/FEB/MAR	40	41	21
APR/MAY/JUNE	40	16	5

GOALS AND ACTUAL NEW CLUBS CUMULATIVE



GOALS AND ACTUAL MEMBERS CUMULATIVE



DROPPED CLUBS: 1

39 CLUBS OF 58 ADDED 1 OR MORE NEW MEMBERS

GENDER DISTRIBUTION

MALE 1,410 (66.79%)
FEMALE 701 (33.21%)

DROPPED MEMBERS

DECEASED	21
CLUB CANCELLED	0
OTHER	104
TOTAL	125

[CLICK HERE FOR CUMULATIVE MEMBERSHIP DATA](#)

TOTAL FAMILY UNIT MEMBERS	500
FAMILY MEMBERS PAYING HALF DUES	254